



SparkTM Solar

Powered By The SunTM

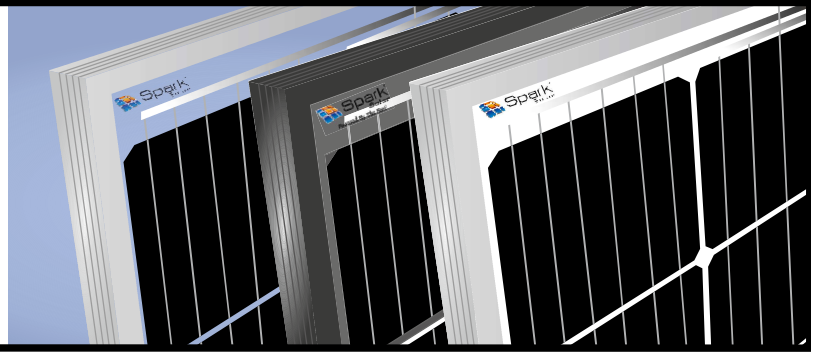
HIGH POWER

HIGH PERFORMANCE

SPARK 72 CELL | 6 Bus Bar Mono PERC Module

Positive power tolerance of 0/+5W

IEC certified products.



QUALITY BY SPARK SOLAR

Solar Modules are at the core of solar power system. That is why you should rely on the best products available in the market when you select solar modules. There's only one right choice here: Spark Solar. Worldwide, our customers have embraced these panels for their excellent performance, superior reliability and enhanced value.

Spark Solar panels are designed and manufactured to the highest standards of quality, performance and durability. The foundation of Spark Solar is built on years of ongoing innovation, continuous optimization and technology expertise. All production steps are established at our production site ensuring the highest possible quality for our customers.

SPARK SOLAR'S ADDED VALUE



Special Six Bus Bar Design

Thanks to improved temperature co-efficient caused by 6 busbar solar cell. A shorter distance for electrons to travel vastly reduces electrodes resistance and raise in conversion efficiency. Less residual stress, less micro-cracks and hotspot risks ensure more power generation in 27 years.



A Reliable Investment

Inclusive 10-year product warranty and 27-year linear performance warranty*



Excellent Module Efficiency

High module efficiency is achieved through advanced cell technology and manufacturing capabilities



New All- Weather Technology

Optimal yields, with excellent low-light and temperature behavior.

$$+ \frac{W}{m^2}$$

High Power Density

High conversion efficiency and more power output per square meter.



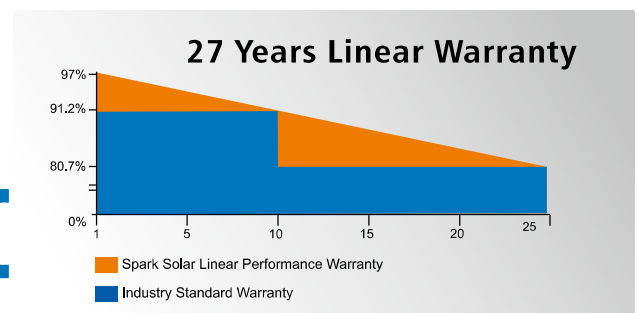
Advanced Glass

Our high-transmission glass features a unique anti-reflective coating that directs more light on the solar cells, resulting in a higher energy yield.



100% EL-Test

All modules pass through Electro-luminescence test, which ensures no micro- crack for more reliability.



Spark-SS 72 MP | 6 Bus Bar Series

upto **20.1%**
10
27

EFFICIENCY

YEAR PRODUCT WARRANTY

YEAR LINEAR POWER OUTPUT WARRANTY

TEMPERATURE RATINGS*

Nominal Module Operating Temperature	:	44.0°C (±3°C)
Temperature coefficient of PMPP	(Y)	-0.39 %/°C
Temperature coefficient of Voc	(B)	-0.28 %/°C
Temperature coefficient of ISC	(α)	0.04 %/°C

*The temperature coefficients stated are linear values

GENERAL DATA

Cell type	:	72 Mono PERC 6 bus bar cells
Cell Matrix	:	72 cells (6 x 12)
Junction box	:	Protection class IP 68, with 3 bypass diodes
Cable	:	4mm ² solar cable, Portrait : N (-) 600 mm, P (+) 700 mm Landscape : ≥ 1200 mm
Frame	:	Silver anodized aluminum alloy
Glass	:	3.2 mm solar glass with anti-reflective technology
Connectors	:	EV02 / TS4 / Multi Contact MC4

MAXIMUM RATINGS

Operating temperature	:	-40 upto +85°C (Permitted Module Temperature on Continuous Duty)
Maximum system voltage	:	1000 V _{DC} / 1500 V _{DC(IEC/UL)}
Max series fuse rating	:	20 A
Max reverse current	:	20 A
Design load (+)	:	367 kg/m ² (3600 Pa)*
Maximum test load (+)	:	550 kg/m ² (5400 Pa)
Design load (-) wind	:	163 kg/m ² (1600 Pa)*
Maximum test load (-)	:	244 kg/m ² (2400 Pa)
Application classification	:	Class A
Safety Class	:	II
Fire Rating	:	C

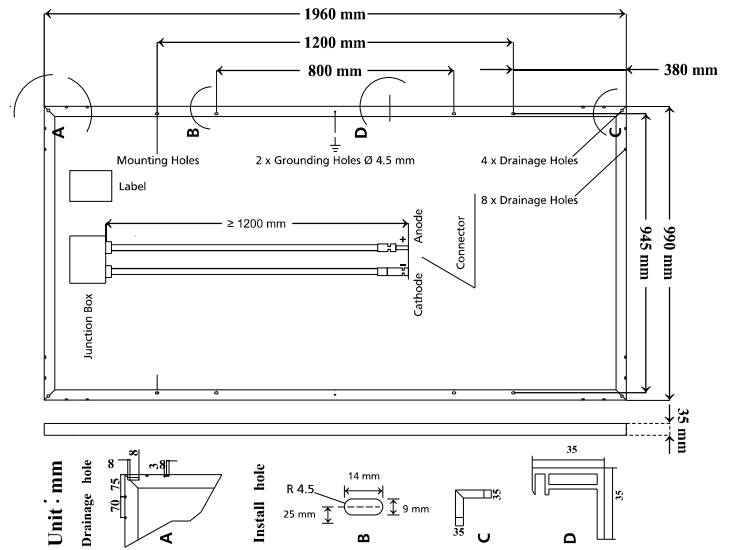
MECHANICAL SPECIFICATION

Dimensions	:	1960 x 990 x 35 mm
Area	:	1.94 m ²
Weight	:	22.5 kg (49.6 lbs)

PACKAGING INFORMATION

Container Size	20'	40'HC
Quantity Per Pallet	22	24
Pallets/Container	12	24
Quantity/Container	264	576

*Due to continuous innovation, research and product improvement the specifications in this product information sheet are subject to change without prior notice. Installation instructions must be followed. See the installation manual or contact technical service department for further information on approved installation. At least 97.5% of nominal power during first year. Thereafter max. depression in performance of 0.7% p.a. See warranty conditions for further details.



ELECTRICAL DATA@STC

Module code* : SSXXX72MP 6BB

		370	375	380	385	390
Nominal Power	- PMPP (Wp)	370	375	380	385	390
Power Tolerance	- (W)	0/+5	0/+5	0/+5	0/+5	0/+5
Nominal Power Voltage	- VMPP (V)	39.32	39.53	39.74	39.95	40.16
Nominal Power Current	- IMPP (A)	9.41	9.49	9.56	9.64	9.71
Open Circuit Voltage	- VOC (V)	48.28	48.57	48.86	49.15	49.44
Short Circuit Current	- ISC (A)	9.89	9.95	10.01	10.07	10.13
Panel Efficiency	- (%)	19.1	19.3	19.6	19.8	20.1

Values at standard test conditions STC (airmass AM 1.5, irradiance 1000 W/m², cell temperature 25°C). *Where xxx indicates the nominal power class (P_{Mpp}) at STC indicated above.

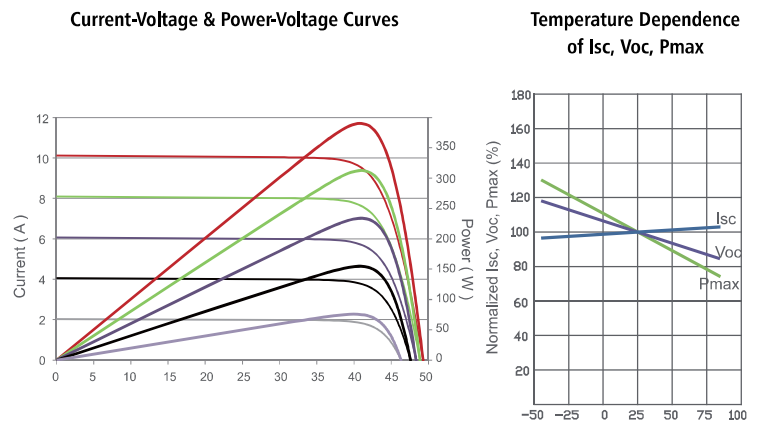
ELECTRICAL DATA@NMOT

Module code* : SSXXX72MP 6BB

		274	278	281	285	289
Nominal Power	- PMPP (Wp)	274	278	281	285	289
Nominal Power Voltage	- VMPP (V)	36.98	37.15	37.32	37.49	37.66
Nominal Power Current	- IMPP (A)	7.4	7.47	7.53	7.60	7.66
Open Circuit Voltage	- VOC (V)	45.17	45.44	45.71	45.98	46.25
Short Circuit Current	- ISC (A)	7.97	8.02	8.07	8.12	8.17

Nominal Module Operating Temperature NMOT (800 W/m², AM 1.5, windspeed 1 m/s, ambient temperature 20°C). Typical values, actual values may differ. *Where xxx indicates the nominal power class (P_{Mpp}) at STC indicated above.

Electrical Performance & Temperature Dependence



Ref: V1 En 04-03-2020



www.spark solar.in